

# Health Care for your Engine starts with "Genuine parts"

Crankshaft

In order to keep your Engine Running longer with safety....

Difference between Genuine and Non-Genuine parts



Ex) S16R CRANK SHAFT 37820-13010

Balance weight Bolt

Genuine



Non-Genuine



Quality/Hardness

Poor Quality



Lower Hardness

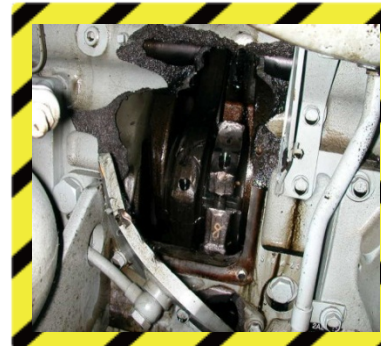


Demerit of Non-Genuine Crankshaft...

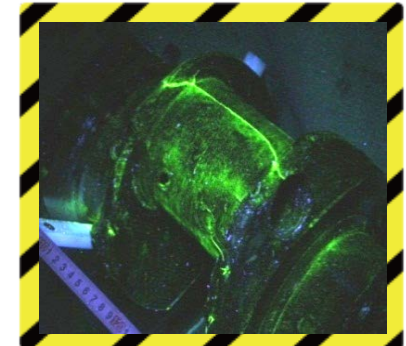
Special heat treatment is applied for crankshaft to harden the surface. Surface hardness of Non-Genuine crankshaft is much lower than that of Genuine crankshaft. If you use Non-Genuine crankshaft, your engine may have serious damage as follows.;

- Ex.1 Excessive wear of crankshaft
- Ex.2 Main bearing and connecting rod bearing seizure
- Ex.3 Crankcase breakage

Non- Genuine crankshaft may lead to crankcase breakage. It is very dangerous and needs huge cost to repair!!



Crankcase breakage



Crankshaft breakage

Cost of Maintenance with Genuine parts

Repair Cost

COST



With Regular Maintenance using Genuine parts, We can keep a your engine in good health and Prevent Unnecessary Costs

 **MITSUBISHI**  
HEAVY INDUSTRIES, LTD.

MHIESA – Public Info  
September 2014