

Health Care for your Engine starts with "Genuine parts"

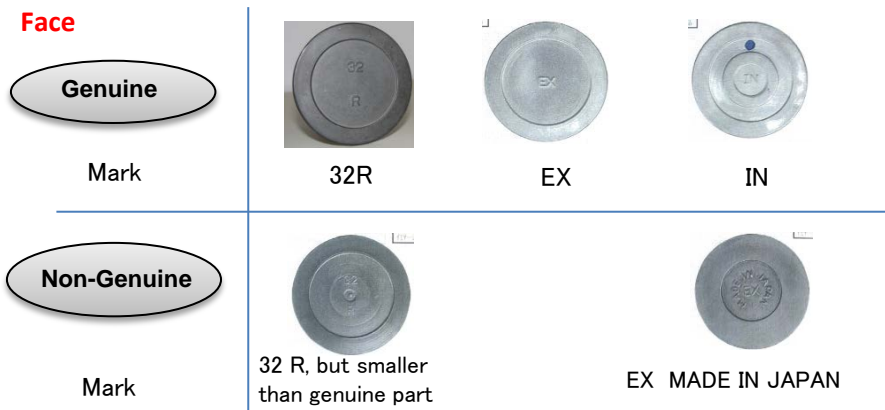
VALVE

In order to keep your Engine Running longer with safety....

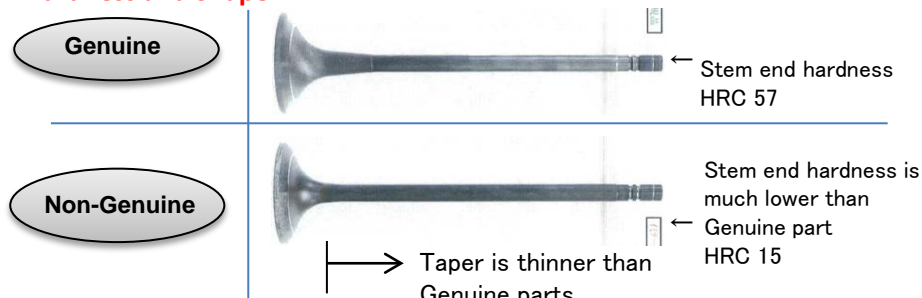
Difference between Genuine and Non-Genuine parts

Ex) For SR 37504-30200, 37504-40200, 37504-03800 etc..

Face



Hardness and Shape

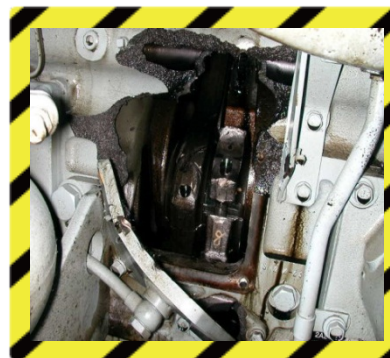


Demerit of Non-Genuine VALVE...

MHI has developed inlet and exhaust valve with many times of sample part trial and test. Inlet and exhaust valve important specifications such as material, dimension, surface treatment and surface hardness are especially designed for MHI engine. If you use Non-Genuine inlet and exhaust valve, your engine may have serious damage as follows;

- Ex.1 Excessive wear of valve face
- Ex.2 Excessive wear of valve stem
- Ex.3 Breakage of valve and valve stem

Above damage may lead to piston breakage and turbocharger breakage, and finally crankcase breakage may happen. It is dangerous and needs big cost to repair!!



 Crankcase breakage



 Valve breakage

Cost of Maintenance with Genuine parts

Repair Cost

COST

With Regular Maintenance using **Genuine parts**, We can keep a your engine in good health and Prevent Unnecessary Costs

 **MITSUBISHI**
HEAVY INDUSTRIES, LTD.

MHIESA – Public Data

September 2014